

Frog-Based Routing Algorithm to Enhance the Network Lifetime of Wireless Sensor Networks

Vidya Honguntikar

Research Scholar, VTU-RRC, Belagavi, India
E-mail: vidyah91@gmail.com

G. S. Biradar

Professor, Dept. of ECE, PDACEG, Gulbarga, India
E-mail: gsbiradar@yahoo.com

Received: 22 April 2017; Accepted: 05 July 2017; Published: 08 August 2017

Abstract—Wireless Sensor Networks (WSN) finds wide applications in both Target tracking and Environment monitoring in almost every field, with the demand growing day by day. Routing is considered as the most important challenge in designing a WSN. To enhance the Network Lifetime, there is a need to have a balanced load sharing with equal consumption of Energy by all the nodes in the Network. Several Routing Protocols have been developed that are inspired by the collective behaviour and principles of social insects and animal societies. Inspired by the Frog behaviour, we in this paper propose an Energy efficient distributed Frog-Based Routing (FBR) algorithm for WSN. Routing path is established considering the nodes that have high residual Energy which makes all the nodes die around the same time, prolonging the Network Lifetime. Simulation was carried out using NS2 and the results of FBR algorithm are compared with two other Energy Efficient Routing Protocols LEACH and SPIN for the evaluation of different performance metrics.

Index Terms—Wireless Sensor Networks, Network Lifetime, Residual Energy, Routing Protocol.

I. INTRODUCTION

WSN consists of spatially distributed Sensor Nodes with many applications being categorized for tracking & monitoring purpose. Applications of WSN in the field of Environment, Military, Health and Home purpose are growing day by day. We know that the routing of data from source to destination is taken care by the Network Layer. Routing Protocols in WSN differ from traditional Routing Protocol which are IP based and therefore cannot be used in WSN because of more overhead and large number of sensor nodes deployment. Moreover, the Protocols are to be designed to meet a number of resource constraints in the Network like Energy limitations, low bandwidth, limited Processing and storage capacities that are application dependent [1].

In the recent years, we find some WSN Protocols developed by the inspiration drawn from the collective

behaviour of insects and animal societies [2]. We presented such evolutionary behaviour observed from the environment and incorporating similar techniques in different areas of WSN in our survey paper [3]. Some of the Bio-inspired Algorithm like PSO, ACO, BEES optimization, Elephant optimization, Cuckoo search, Bat Algorithm, Firefly Algorithm and Genetic Algorithm are discussed briefly in the survey paper. This paper proposes a bio-inspired Frog-Based Distributed Routing for WSN that establishes a routing path from source to sink, considering the nodes that have high residual Energy. Our proposed Algorithm is capable of identifying a routing path such that, there is an equal consumption of Energy by all the nodes which aims at maximum Lifetime of the Network. Simulation results for different performance metrics like Energy, Throughput and Packet delivery ratio are obtained and also compared with two other Energy Efficient Routing Protocols. The organization of the paper is as follows: In Section II we discuss Routing Protocols and Swarm Intelligence based Routing Protocols in WSN and the related work, Section III describes the Frog behaviour and incorporation of such technique in routing for WSN, Section IV presents the Algorithm and simulation results, Section V provides the comparative performance analysis of the proposed Frog based Routing algorithm with LEACH and SPIN protocol and finally we conclude the paper in section VI.

II. ROUTING AND RELATED WORK

Flat based Routing, Hierarchical based Routing and Location based Routing are the three categories of Routing [4].

Flat based Routing: Flooding is a technique used to build the Routing table. All the nodes are equal and perform similar functions of collecting the data and also act as relay nodes in transmitting data. Further the Flat based can be classified into three modes as: Traditional Flooding, Event driven and Query-driven Modes. In Traditional Flooding mode sensor nodes broadcast the

received information to the neighbouring nodes until they reach the sink node. In Event driven mode, routing table helps in choosing the next hop and the sensed messages are broadcasted to the sink. SPIN, Rumour Routing, Energy-aware Routing are the different Event driven Protocols. Further in Query- driven mode, application specific request is broadcast by the sink node to its neighbours and the nodes that are requested would respond to it. Direct Diffusion and Gradient based Routing are the Query driven mode Protocols.

Hierarchical based Routing: The entire Network is divided into clusters. The different Layers help in choosing the cluster head and Routing. LEACH and PEGASIS are the single layer Hierarchical based Routing Protocols while TEEN, APTEEN and Cluster based Energy-aware Routing are Hierarchical tie-based.

Location based Routing: Also called as Geographic Protocols, assume that location is known to sensor nodes or computed, to transmit the data directly. Storm caused by Flooding can be avoided in this Routing. GEAR and MECN are the popular location based Routing.

Further Routing can be classified as Centralized and Distributed. In Centralized, the Routing is taken care by a single node called Sink. On the contrary in Distributed Routing, the information is gathered by every node, on its own and no topology information needs to be exchanged among the neighbouring nodes. Popularity for distributed WSNs is growing in the recent years. It has wide range of applications being robust to any network changes and is suitable for Dynamic Networks.

There exist some Protocols that are based on Swarm Intelligence principles. Swarm Intelligence is a science, addressing the behaviour of insects and animal societies that inspire in designing effective Routing Algorithm in a distributed manner. These Algorithms exhibit adaptability, scalability, flexibility and robustness which are the required properties for any Routing Protocol. Some of the works related to Swarm Intelligence are discussed below:

In Ant Colony Optimization (ACO) Routing, foraging behaviour of some Ant species forms an inspiration for developing the Routing Protocol. The Foraging behaviour can be described as follows: The first Ant goes in search of food and when back to the nest leaves behind the Pheromone trail. All other Ants follow similar such ways and the strengthened runway will indicate the shortest route. This is incorporated in WSN in solving dynamic and distributed problems of Routing [5]. Paper [6] gives a comprehensive overview of bio-inspired techniques which include Ant based and Genetic based approaches in solving Routing in Sensor Networks. Energy supply being a serious constraint of WSN, the authors of Paper [7] propose a Routing Algorithm based on ACO considering the path delay and balanced Power consumption to achieve dynamic and adaptive Routing. Aiming Network Lifetime to the maximum, Paper [8] presents a novel Routing approach that optimizes Routing and provides an effective multipath transmission

of data using ACO Algorithm. Authors of Paper [9] developed an algorithm based on the behaviour of Queen-Ant in Ant colony, for transmission of remote information thus fulfilling long distance communication. Foraging behaviour of Honey Bees which, exhibit self-organization and division of labour acts as an inspiration to the authors of Paper [10]. A Routing algorithm is developed for wired networks with discovery of route on-demand. Comparison of the same is performed with FP-Ant, EEABR and AODV. The main objective of the authors of paper [11] was to design and develop new approaches for Routing attack which pose a major threat. This work is again inspired by the Bee and Ant Swarm attacks. The Authors of paper [12] propose a model based on the mobility of the Ant to develop a multipath routing algorithm that coordinates the nodes and control the power while communicating in Wireless Networks.

The Authors of Paper [13] have developed a Routing algorithm UFCA, which is Energy efficient for under water WSN inspired by Ultrasonic Frog calling. This algorithm does not require periodic flooding of messages or fixed routing tables for discovering the Routing path. The algorithm provides an optimal routing path in 3D under water WSNs with harsh conditions and taking into consideration the Energy consumption. Further the simulation results of UFCA are compared with Vector-based forwarding and Energy Efficient Routing Protocol. Inspired by such work, this Paper proposes an FBR algorithm for Terrestrial WSN with a distributed approach, utilizing sleep schedule technique and equal consumption of Energy to Enhance the Network Lifetime. Simulation results are compared with LEACH and SPIN Protocols.

III. FROG CALLING BEHAVIOUR AND PROPOSED ROUTING

Frogs and Toads during their courtships and mate assessment, produce a rich variety of sounds and call. Sound produced are stereotypes in order to advertise their territory and also their location. Frogs that are listening respond by calling back or by going silent. The female Frog makes the initial call and in response to it the neighbouring male Frogs produce advertisement calls. Random calling of Frogs will overlap the calls causing interception and thus the female Frog will not be able to identify the call. During chorus calls an individual Frog keeps track of who calls, listening to their neighbour before calling in order to avoid overlapping of calls which leads to interference. Frogs exhibit self-organized calling behaviour by calling alternately to reduce the interception and conserve the Energy [14]. This self-organized Frog behaviour with sleep scheduled technique was incorporated for scheduled data transmission in WSN was presented in our earlier Paper [15].

Frog calling is linked with Physical size and female Frogs move towards the bigger Frog with louder call which also indicates to be the nearer one, thus establishing a path for itself. Other Frogs on hearing to the louder call go silent and hence conserve the Energy

[13], [16]. This paper incorporates a similar concept to identify a node with higher residual energy called as the Active node among the neighbouring nodes and develop an FBR Algorithm to establish Routing path in WSN. FBR algorithm is a sleep scheduled Energy efficient bio-inspired distributed Algorithm. Simulation is carried out using Network Simulator NS2. Considering a WSN with random deployment of nodes, we assume that location of every sensor is known in the network. We identify a routing path considering the highest residual Energy node moving in a forward direction from source to destination. Neighbour discovery and Active node selection are two stages in identifying the Routing path consisting of Active nodes with high residual Energy through which the data is transmitted to sink.

Neighbour Discovery: The source node when ready for transmission of data broadcasts a message called ready to transmit to its neighbouring nodes that are within its transmission range similar to the call made by a female Frog. The boundary threshold for nearest neighbour is considered here as 250 meters. The neighbouring nodes whose distance to the sink is less than the distance between the source and the sink are chosen as neighbours considering the routing path in the forward direction.

Representing with notational terms, let us consider a WSN with number of nodes represented by λ , then the boundaries of WSN is given by:

$$\Delta T_n \{ \lambda \} \tag{1}$$

where,

T_n represents the total node vector.

Selection of the source and the destination node randomly given by:

$$\Delta_n \square \cup (T_n [0, \lambda - 1]) \tag{2}$$

Source node is uniformly distributed from 0 to $\lambda - 1$ nodes.

$$d_n \square \cup (T_n [0, \lambda - 1]) \tag{3}$$

Destination node is uniformly distributed from 0 to $\lambda - 1$ nodes.

$[P_{ij}]$, is similarity matrix containing the position of all the nodes. Similarity matrix indicates WSN Position boundaries.

Distance matrix $X \Leftarrow [d]$, provides the source and destination node position as coordinates.

To get exact WSN position of source or destination node, we use X vector position boundaries.

$$S_n [X, Y] = \sum X \tag{4}$$

$$D_n [X, Y] = \sum X \tag{5}$$

Equation (4) and (5) gives the position of source and destination node.

Position of nodes individually to t_1, t_2 is given by:

$$t_1 = s_n |x| - d_n |x| \tag{6}$$

$$t_2 = s_n |y| - d_n |y| \tag{7}$$

The distance is calculated by using the Euclidean distance formula as:

$$D = \sqrt{(t_1 * t_1) + (t_2 * t_2)} \tag{8}$$

Active node selection: The neighbouring nodes now exchange their residual Energy among themselves in a scheduled manner on a round robin fashion to avoid collision similar to the alternating Frog call behaviour. Once the nodes receive the other nodes energy message they compare with its own & if observed less will go to sleep mode until once again a node sends a broadcast message for transmission. R_E is a function that gets all the residual energies of the neighbouring nodes given by

$$R_E \Leftarrow \int_0^{\lambda-1} E \tag{9}$$

R_E , the Residual Energy is calculated as follows:
The Initial energy of the nodes,

$$I_n \Leftarrow (\beta \in R_E [0, 1, \dots, n]) \tag{10}$$

The Final energy of the nodes,

$$F_n \Leftarrow (\beta \in R_E [0, 1, \dots, n]) \tag{11}$$

Residual Energy is given by,

$$R_E |F_n - I_n| \tag{12}$$

The neighbouring node with highest Residual Energy is identified as follows:

For each n, F_n & T_n ,

To obtain the residual energy from the forward neighbour,

$$t = R(C_n, \rightarrow f_n(n)) [X_1] \tag{13}$$

Exempting all the preceding nodes (C_n) from the main node vector (T_n) and to get the neighbour from all the nodes in forward direction,

$$N_n = T_n (t) \tag{14}$$

$$\text{POS} = \text{POS}(N_n) \quad (15)$$

Equation (15) gives the current node position.

$$T_n(N_n \rightarrow D_n) \quad (16)$$

Equation (16) indicates the transfer the packets from the current node to the neighbouring node.

The female Frog listens to its neighbours call and identifies a Frog with a louder call indicating a bigger size Frog and approaches towards it. Similar to the Frog behaviour, the node in WSN which has the highest residual Energy is chosen as Active node and hence a path is established for the transmission of data from source to the Active node. The Active node now identifies its neighbour and finds the next Active node among its neighbour and this is repeated until the Sink is reached. Thus a Routing path with high residual Energy node is established from source to sink with intermediate Active nodes. By choosing the highest residual energy nodes for transmission of data and inducing the other nodes to go to sleep, the Energy is conserved with enhancement in Network lifetime.

The above process is depicted diagrammatically in Fig. 1. Routing process is represented in six stages. In the first stage the source node and destination node being the sink are selected. In the second stage the neighbours to the source are discovered. Further in the third stage an Active node is identified which represents the node with highest residual energy among the neighbouring nodes. New neighbours are discovered to the present Active node in stage four and in stage five the process of identifying the next Active node among the neighbours is repeated. Finally, the stage six shows the Routing path developed from source to sink.

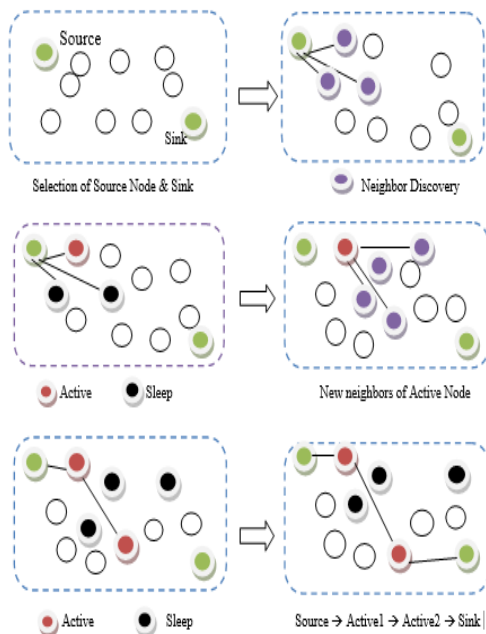


Fig.1. FBR Routing Process

IV. ALGORITHM AND SIMULATION RESULTS

Simulation was carried out using NS2 Network Simulator for Frog based Routing Algorithm. The notations used in the network model and their descriptions are listed in Table 1.

Table 1. Network Parameter Notations

Variable	Description
λ	Number of Nodes in the Network
R_t	Transmission range
N_n	Node with highest residual Energy
d_{as}	Distance between Active Node and Sink
d_{ns}	Distance between Neighbouring node and Sink

Consider a WSN with random deployment of nodes whose location is represented by X and Y coordinates. Table 2 below gives the Algorithm for Frog Based Routing in Steps. This algorithm identifies the nodes with highest residual energy here called as Active nodes from the source to the sink in a forward direction, thus establishing a Routing path. By considering the nodes with higher residual Energy we prolong the Network Lifetime with equal consumption of Energy by all the nodes.

Table 2. Frog Based Routing Algorithm

Input: WSN with Nodes deployed randomly with X & Y coordinates;

Output : Active node, Routing path;

Random topology is created with λ nodes.

Select Source and the Sink.

Let the Source be Active Node

while (Sink is not reached)

 Compute the distance d_{as}

If $d_{as} < R_t$

 Transmit data to Sink

else

 Active node broadcasts - ready to transmit message

 Identify the nodes in R_t range

 Compute the distance d_{ns} of all nodes in this range to Sink

if $d_{ns} < d_{as}$

 Node discovered as a neighbour

 Neighbours exchange the energy to

 identify N_n

N_n is declared as current Active node

 Other neighbours go to SLEEP mode

 Transmit data to Active node

Endwhile

Fig. 2 shows the residual Energy of all the nodes in the Network for FBR. From the graph we analyze that Residual Energy is nearly the same in all the nodes varying from 49 to 50 joules thus achieving equal

consumption of energy and load sharing. This equal consumption of energy and load sharing which is required such that all nodes die around the same time to enhance the Network Lifetime.

Fig. 3 depicts the graph of Packet delivery Ratio. We can observe that the ratio is less initially, because the first stage comprises of identification of neighbours. The ratio goes to maximum of 90% during the transmission of data.

Fig. 4 is a graph showing Throughput. Throughput is high as there is no disruption in Packet delivery.

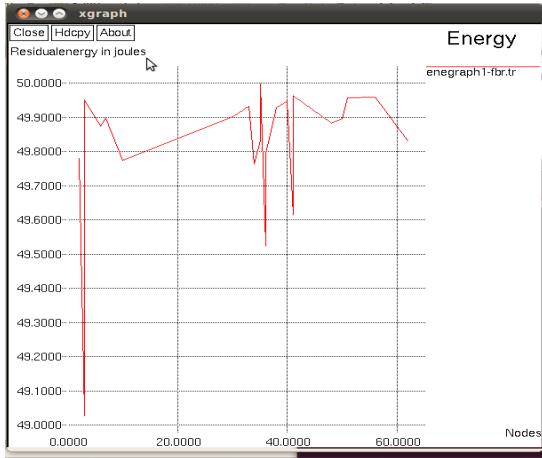


Fig.2. Residual Energy vs Nodes

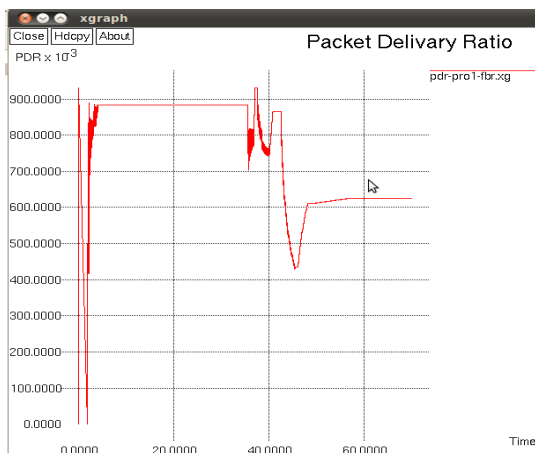


Fig.3. Packet delivery Ratio Vs Time

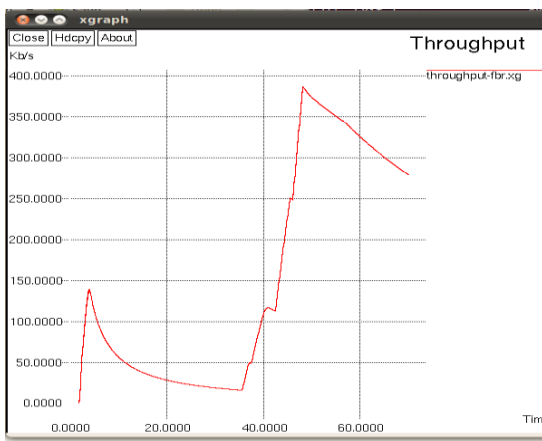


Fig.4. Throughput vs Time

V. PERFORMANCE ANALYSIS OF FBR ALGORITHM WITH LEECH AND SPIN PROTOCOLS

The Simulation results of proposed Frog Based Routing algorithm are depicted for Residual Energy, Throughput and Packet delivery ratio. Simulation was also carried out using the same Network scenario for LEACH and SPIN Protocols. The results of FBR are analysed with LEACH and SPIN Routing Protocols. LEACH is a hierarchical protocol, where every cluster owns a cluster head to which all nodes communicate in a TDMA fashion scheduled by the cluster head. Cluster heads keep changing at every round. The nodes identified as cluster heads initially, cannot continue to become cluster heads again for a desired percentage of rounds. The disadvantage of LEACH is that it uses full power all the time to reach the Cluster head or the Base station consuming more Energy [17]. SPIN is a data-centric Protocol with more Energy efficiency than Conventional models which waste communication and Energy resources by sending redundant information using Flooding & Gossiping for data dissemination. SPIN eliminates the redundancy of data by making the sensor nodes broadcast, only the data which is unique and not owned by the neighbour. A meta-data negotiation is carried out by the node before the data is transmitted. ADV, REQ and DATA are the three message data used by it. The negotiation is done by ADV which broadcasts its own meta-data to near-by nodes and REQ giving a notice of sending raw data between the sender and the receiver. The disadvantage of this Protocol is that it is not suitable for high density distribution of nodes due to uncertainty of data reaching the end node [17].

The graphs showed below makes a comparative performance analysis of FBR with LEACH and SPIN Protocols. In Fig. 5, Packet delivery ratio of FBR algorithm is high initially and later reduces slightly because of time gap in accessing files for distance and Energy.

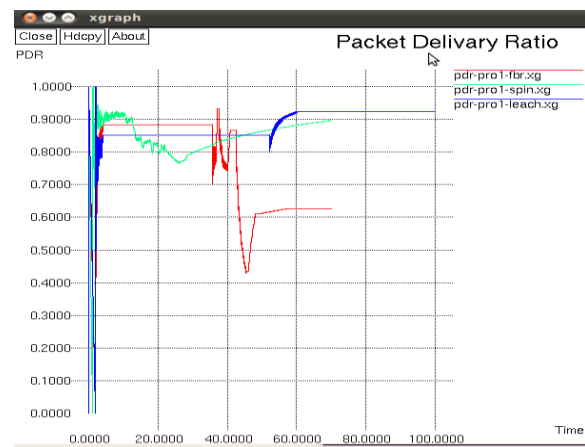


Fig.5. Packet delivery Ratio of FBR, LEECH and SPIN vs Time

Fig. 6 shows the residual Energy graph for FBR, LEACH, and SPIN. The residual Energy of all the nodes in FBR is quite high compared to LEACH and SPIN Protocols as they share the same level of residual Energy.

Energy consumption of all the nodes in FBR algorithm is nearly equal varying from 40 to 50 joules which depicts efficient load sharing. Throughput of FBR in Fig. 7 is very high as there exists, a successful delivery of packets compared to LEACH and SPIN.

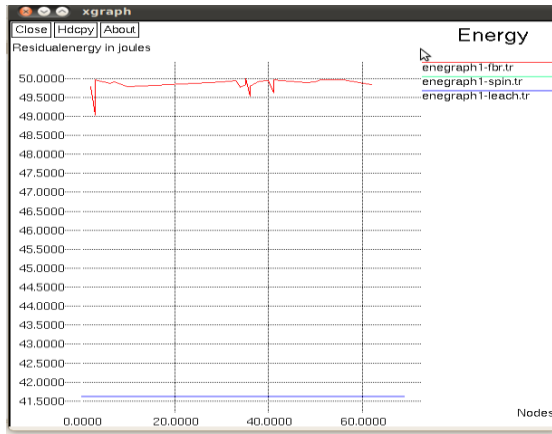


Fig.6. Residual Energy of FBR, LEECH and SPIN vs Nodes

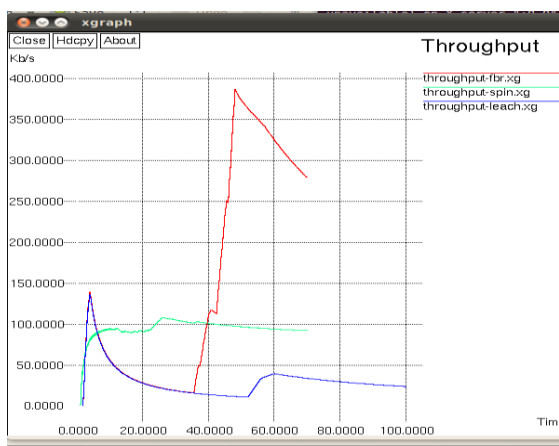


Fig.7. Throughput of FBRA, LEECH and SPIN vs Nodes

VI. CONCLUSION

Enhancement of Network Lifetime with Energy Efficiency is the essential design requirement for any WSN. Routing being a challenging concern, research on routing protocols is one of the important research areas. We in this paper, inspired by the Frog behaviour have developed an Energy Efficient Distributed Routing algorithm that establishes a Routing path conserving the Energy using sleep scheduling technique. This algorithm utilizes the nodes with high residual Energy and considers only those nodes which are in a forward path, as neighbours for transmission of sensed data. Energy utilization, Throughput and Packet delivery ratio are the metrics used to evaluate this Routing algorithm. Simulation was carried out and results were compared with LEACH and SPIN Routing Protocols for performance analysis. As a future work the performance of this protocol can be analysed with other distributed Routing Protocols.

REFERENCES

- [1] Jennifer Yick, Biswanth Mukherjee, DipakGhosal, "Wireless Sensor network survey", *Computer networks* (2008), 52, pp. 2292-2330.
- [2] Muhammad Saleem, Gianni A. Di Caro, Mudassar Farooq, "Swarm Intelligence based routing protocol for wireless sensor networks: Survey and future directions", *Elsevier Publications, Information Sciences* 181 (2011), 4597- 4624.
- [3] Vidya Honguntikar, G. S. Biradar, "Optimization techniques incorporating Evolutionary model n Wireless Sensor Network", A Survey. *IOSR-JCE*, E-ISSN: 2278-0661, p-ISSN: 2278-8727, vol.1 6, Issue 5, Sept-oct, 2014, pp 19-24.
- [4] Jian Wan, Daomin Yuan, Xianghua Xu, "A Review on Routing Protocols in Wireless Sensor networks", *International journal of enhanced research in science and technology*, ISSN: 2319-7463, vol 4, issue 5, 2015, pp: (49-55).
- [5] Md. Akhtaruzzaman Adnan, Mohammad Abdur Razzaque, Ishtiaque Ahmed, Ismail Fauzi Is nin, "Bio-mimic Optimization Strategies in Wireless Sensor Networks: A Survey", *Sensors* 2014, 14, pp. 299-235.
- [6] S. S. Iyengar, Hsiao-Chun Wu., N Balakrishnan, and Shih Chang, "Biologically Inspired Cooperative Routing for Wireless Mobile Sensor Network", *System journal, IEEE*, vol 1, issue:1, 2007, pp. 29-37.
- [7] Xie Hui, Zhang Zhi-gang, NIE Feng, "A Novel Routing Protocol in Wireless Sensor Networks based on Ant Colony Optimization", *International journal of Intelligent Information Technology Application*, 2010, 3(1): 1-5.
- [8] Selcuk Okdem and Dervis Karaboga, "Routing in Wireless Sensor Networks using Ant Colony Optimization(ACO) Router Chip", *Sensors* ISSN 1424-8220, 13th Feb. 2009, 9, 909-921.
- [9] Hongjian Sun, Jing Jiang, Maoliu Lin, Xuezhi Tan, "Queen-Ant-Aware-Based Algorithm for Wireless Sensor Networks Routing", *Proceedings of 2006 IEEE International Conference on Information Acquisition*. Aug. 20-23, 2006, Weihai, Shandong, China.
- [10] Fatih Celik, Ahmet Zengin and Sinan Tuncel, "A Survey on swarm intelligence based routing protocols in Wireless Sensor Networks", *International journal of Physical Sciences*, vol. 5(14), pp. 2118-2126, 4 Nov, 2010.
- [11] Ibrahim S. L. Abuhaiba, Huda B. Hubboub, "Swarm Flooding Attack against Directed Diffusion in Wireless Sensor Networks", *International Journal of Computer Network and Information Security*, November 2012, 12, 18-30, MECS Publishers.
- [12] S. Menaka, Dr. M.K. Jayanthi, "Intelligent Routing using Ant Algorithms for Wireless Ad Hoc Networks", *International Journal of Computer Network and Information Security*, August 2013, 10, 51-57, MECS Publishers.
- [13] Ming Xu, Guangzhong Liu and Huafeng Wu, "An Energy Efficient Routing Algorithm for Underwater Wireless Sensor Networks Inspired by Ultrasonic Frogs", *International Journal of Distributed Sensor Networks*, vol 2014, Article ID 351520, 12 Pages.
- [14] Akira Mutazono, Masashi Sugano, Masayuki Murata, "Frog Call-Inspired Self-Organizing Anti-Phase Synchronization for Wireless Sensor Network", *ISAT Transactions on Computers and Intelligent Systems*, vol 1, no. 2, pp. 86-93, Dec. 2009.
- [15] Vidya Honguntikar, G. S. Biradar, "Anuran Inspired Collision Free Self-Organized Transmission Scheduling

in Wireless Sensor Network", 2016 *IEEE International conference on Control and Robotics Engineering (ICCRE)*, 2-4 April 2016, Singapore, added to IEEE Xplore: 23 May 2016, INSPEC Accession No: 16005618, DOI: 10.1109/ICCRE.2016.7476143.

- [16] Andrea Megela Simmons, "Call recognition in the bull Frog, *Rana Catesbeiana*: Generation along the duration continuum", *Journal of the Acoustical society of America*, vol 115, issue 3, 1345-1355, 2004.
- [17] Heinzelman, Wendi B., Anantha P. Chandrakasan, Hari Balakrishnan, "An Application-Specific Protocol Architecture for Wireless Micro Sensor Networks", *IEEE Transactions on Wireless Communications* 1. 2002, No. 4.
- [18] W. Heinzelman, J. Kulik, H Balakrishnan, "Adaptive Protocols for Information dissemination in Wireless Sensor Networks", *Proc. 5th ACM/IEEE Mobicom Conference*, Seattle, WA, August 1999, 174-185.
- [19] P. Raghu Vamsi, Krishna Kant, "An improved Trusted Greedy Perimeter Stateless Routing for Wireless Sensor Networks", *International Journal of Computer Network and Information Security*, October 2014, 11, 13-19, MECS Publishers.

Authors' Profiles



Vidya Honguntikar received B. E. degree in Electronics and Communication Engineering from Gulbarga University, Karnataka, India in 1990 and received M.E in Electronics from UVCE, Bangalore University, Karnataka, India in 1998. She is a research scholar registered in Visvesvaraya Technological University

(VTU), Belagavi, Karnataka, India and is presently working as an Associate Professor in Department of Telecommunication Engineering, Dr. Ambedkar Institute of Technology, Bangalore, Karnataka, India (An autonomous institution affiliated to VTU Belagavi, Karnataka). She has 24 years of experience in teaching. Her research field is Wireless Sensor Networks.



Dr. G.S. Biradar received the B. E. degree in Electronics and Communication Engineering from Gulbarga University, Karnataka, India, in 1990, M.Tech. degree in Telecommunication Systems Engineering from the Indian Institute of Technology Kharagpur India, in 2002 and Ph.D degree from Indian Institute of Technology Mumbai, India, in 2010. Presently he is working as a professor in Electronics and Communication department of P.D.A. College of Engineering Gulbarga, Karnataka (An autonomous institute affiliated to VTU, Belagavi, Karnataka). He has more than 24 years of experience in teaching and research. His broad area of research interest is in wireless communication, wireless sensor networks, multiuser detectors, ultra wide band communication and signal processing and has published extensively in these areas.

He is a reviewer for many leading international and national journals and conferences. He has published five international journal papers and twenty-seven international conference papers. He is a recipient of best technical paper award of Shri Hari vallabhdas Chunnilal Shah Research endowment award for the year 2010 from Sardar Patel university Anand, Gujrat.

Dr. Biradar is a life member of ISTE and IEI.

How to cite this paper: Vidya Honguntikar, G. S. Biradar, "Frog-Based Routing Algorithm to Enhance the Network Lifetime of Wireless Sensor Networks", *International Journal of Computer Network and Information Security (IJCNIS)*, Vol.9, No.8, pp.9-15, 2017. DOI: 10.5815/ijcnis.2017.08.02